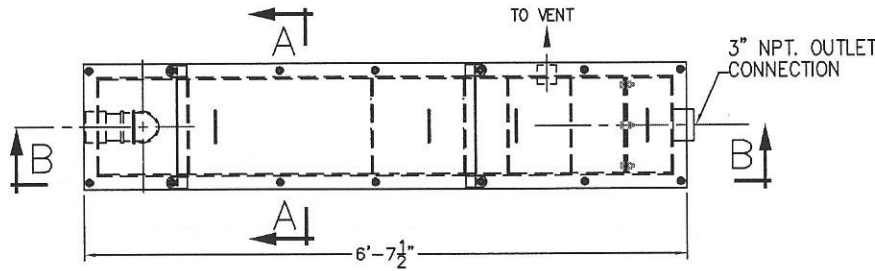
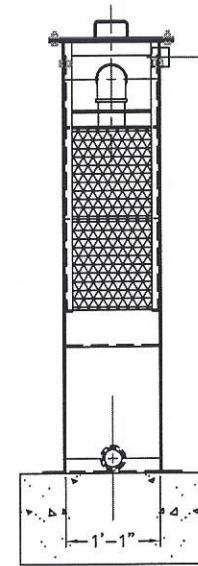
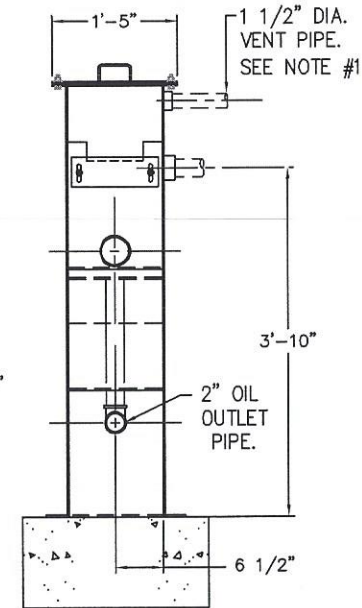
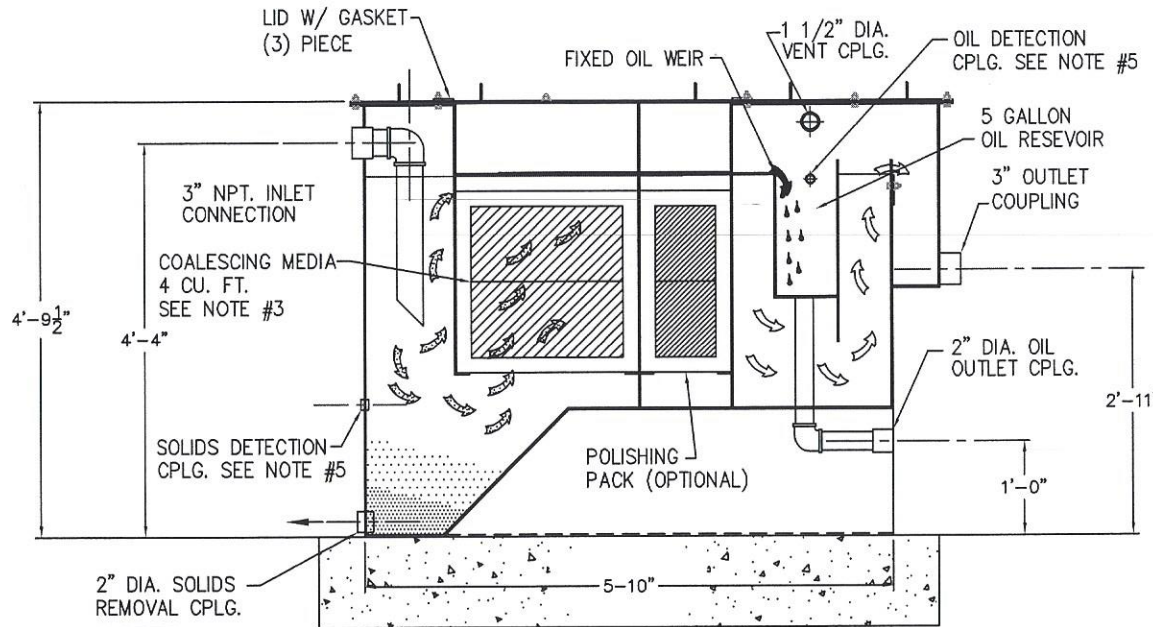


MODEL UNIT	OCS-7
HYDRAULIC CAPACITY GAL/DAY	10,300
COALESCING AREA FT	190
NO. OF STD FRAME PACKS	1
SLUDGE CAPACITY GALLONS	35
OIL RESEVOIR CAP. GALLONS	8
OIL SPECIFIC GRAVITY	.85
MAXIMUM TEMPERATURE DEG. F	140
OPERATING WEIGHT LBS.	2800



GENERAL NOTES:

- 1.) ALL EXTERNAL PIPING TO THE COUPLINGS IN THE SIDE OF TANK FOR THE SOLIDS, OIL REMOVAL & VENT PIPES ARE BY OTHERS.
- 2.) FOUNDATION PAD MUST BE LEVEL TO WITHIN 1/8" IN BOTH DIRECTIONS
- 3.) LOCATION ELEVATION AND POSITION MUST BE VERIFIED BEFORE ANCHORING OF TANK TO THE FOUNDATION PAD.
- 4.) OVERHEAD ROOM IS REQUIRED FOR MEDIA REMOVAL.
- 5.) COUPLINGS PROVIDED FOR CUSTOMER TO ADD HIGH OIL LEVEL AND SOLIDS DETECTION ALARM



MATERIAL NOTES:

- 1.) TANK TO BE FABRICATED W/ 1/4" ASTM PLATE
- 2.) TANK INTERIOR TO BE SANDBLASTED TO (SSPC-SP5) NEAR WHITE FOLLOWED BY PAINTING WITH ONE (2) COATS OF TNE MEC 120 VINYL ESTER COATING (GREY COLOR)
TANK EXTERIOR TO BE SANDBLASTED TO (SSPC-SP6) COMMERCIAL BLAST CLEANING FOLLOWED BY PAINTING WITH ONE (2) COATS OF OF TNE MEC SERIES 66 HIGH BUILD EPOXY (GREY COLOR)
- 3.) COALESCING MEDIA TO BE 10 MIL. PVC CROSS CORRUGATED, MAX TEMP. 140° F.

VIEW B-B

END VIEW

VIEW A-A

PCS Pollution Control Systems, Inc.
5827 Happy Hollow Rd, Suite 1B
Milford, Ohio 45150
Ph: (513) 831-1165 Fx: (513) 965-4812
E-mail PolConSys@aol.com

OCS-7 ASSEMBLY
7 GPM OIL COALESCING SEPARATOR

SCALE: 3/4"=1'-0"	QUOTE NO.	PROJECT NO.	
DRAWN BY: JUM	DATE: 1/29/13	SHEET	DRAWING NO.
CHECKED BY: JUM	DATE: 1/29/13	1 OF 1	OCS-7

REV.	DATE	DESCRIPTION	APPROV.

THIS DRAWING CONTAINS INFORMATION THAT IS PROPRIETARY TO POLLUTION CONTROL SYSTEMS AND IS NOT TO BE USED WITHOUT PERMISSION OF POLLUTION CONTROL SYSTEMS